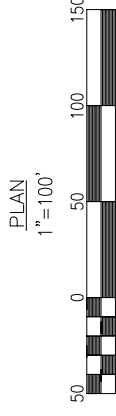
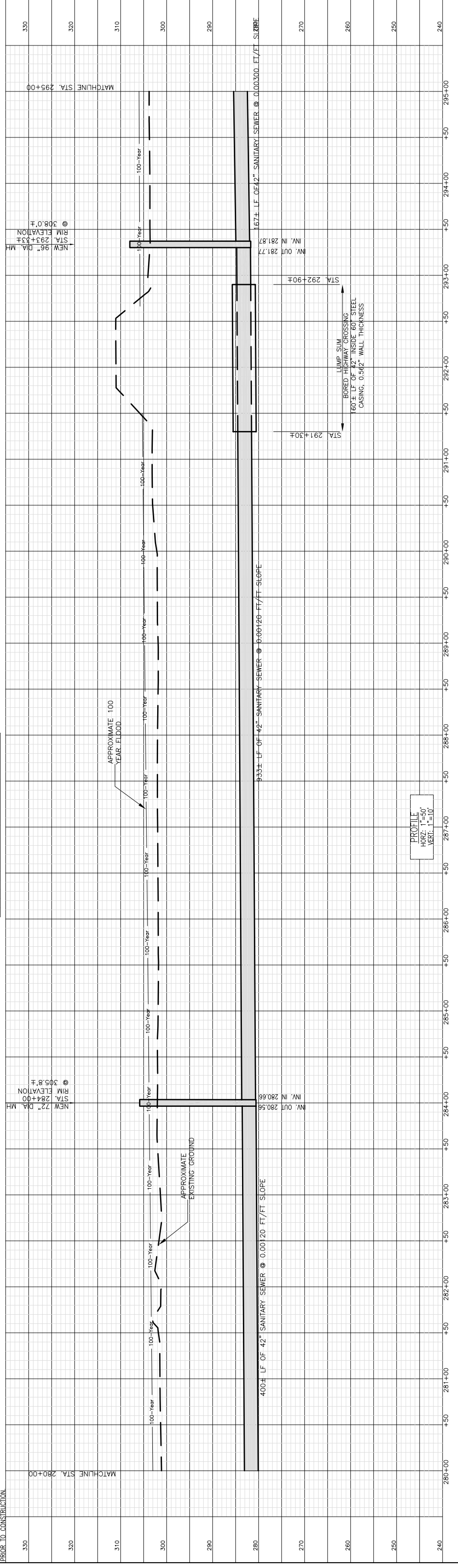


MATCHLINE STA. 295+00 SHEET C1.06

IRM STA. 288+00±  
RAILROAD SPIKE IN 24" ELM  
ELEV.: 302.99'  
N: 197.6439.4540  
E: 243.6742.5828



CONTRACTOR NOTE: ALL EXISTING UTILITIES ON THESE PLANS ARE FOR INFORMATION ONLY. NO GUARANTEE IS OFFERED OR TO BE IMPLIED REGARDING THE ACCURACY OF THE LOCATIONS OF EXISTING UTILITIES. THE CONTRACTOR SHALL BE RESPONSIBLE FOR ACCURATELY DETERMINING THE LOCATION OF ALL EXISTING UTILITIES PRIOR TO CONSTRUCTION.



DESIGNED	DATE	PROJECT NO.
TMH	OCTOBER 2003	16535.05
DRAWN	SCALE	CONTRACT
TMH	AS NOTED	1
CHECKED	JOB NO.	SHEET
CRF	16535.05	C1.05
BY	APP'D	
NATURE	REVISIONS	



DESOTO COUNTY REGIONAL UTILITY AUTHORITY  
UPPER CAMP CREEK INTERCEPTOR NORTH  
DESOTO COUNTY, MISSISSIPPI

100% SET

